

Thursday 27th May 2021

Age group	Population	Dose 1	% of population with at least 1 dose	Dose 2	% of population fully vaccinated	Total administered
00-11	663,783	0	0	0	0	0
12-14	166,087	48,891	29.4	13	0	48,904
15-19	258,656	94,259	36.4	1,316	0.5	95,575
20-24	276,991	105,439	38.1	5,772	2.1	111,211
25-29	310,735	123,809	39.8	10,421	3.4	134,230
30-34	356,322	163,541	45.9	13,096	3.7	176,637
35-39	366,699	180,681	49.3	14,755	4	195,436
40-44	325,544	180,312	55.4	13,884	4.3	194,196
45-49	291,312	173,668	59.6	13,370	4.6	187,038
50-54	262,948	176,346	67.1	12,624	4.8	188,970
55-59	285,387	196,859	69	13,362	4.7	210,221
60-64	271,707	203,173	74.8	15,241	5.6	218,414
65-69	217,596	176,883	81.3	18,744	8.6	195,627
70-74	166,506	137,636	82.7	29,959	18	167,595
75-79	107,003	90,334	84.4	75,463	70.5	165,797
80-84	69,877	60,261	86.2	51,438	73.6	111,699
85-89	44,852	38,715	86.3	33,679	75.1	72,394
90+	28,637	24,755	86.4	22,005	76.8	46,760
Unknown	NA	22,293	NA	9,320	NA	31,613
12+	3,806,860	2,197,855	57.7	354,462	9.3	2,552,317
ALL	4,470,643	2,197,855	49.2	354,462	7.9	2,552,317

Friday 28th May 2021

Age group	Population	Dose 1	% of population with at least 1 dose	Dose 2	% of population fully vaccinated	Total administered
00-11	663,783	0	0	0	0	0
12-14	166,087	57,848	34.8	32	0	57,880
15-19	258,656	108,073	41.8	1,538	0.6	109,611
20-24	276,991	117,326	42.4	6,264	2.3	123,590
25-29	310,735	135,104	43.5	11,057	3.6	146,161
30-34	356,322	174,860	49.1	14,067	3.9	188,927
35-39	366,699	192,482	52.5	15,929	4.3	208,411
40-44	325,544	188,540	57.9	15,017	4.6	203,557
45-49	291,312	180,429	61.9	14,500	5	194,929
50-54	262,948	181,015	68.8	13,950	5.3	194,965
55-59	285,387	200,790	70.4	14,896	5.2	215,686
60-64	271,707	205,992	75.8	17,218	6.3	223,210
65-69	217,596	178,040	81.8	22,336	10.3	200,376
70-74	166,506	138,331	83.1	33,066	19.9	171,397
75-79	107,003	90,616	84.7	75,833	70.9	166,449
80-84	69,877	60,438	86.5	51,679	74	112,117
85-89	44,852	38,811	86.5	33,846	75.5	72,657
90+	28,637	24,799	86.6	22,096	77.1	46,895
Unknown	NA	22,922	NA	8,827	NA	31,749
12+	3,806,860	2,296,416	60.3	372,151	9.8	2,668,567
ALL	4,470,643	2,296,416	51.4	372,151	8.3	2,668,567

Saturday 29th May 2021 (2)

Age group	Population	Dose 1	% of population with at least 1 dose	Dose 2	% of population fully vaccinated	Total administered
00-11	663,783	0	0	0	0	0
12-14	166,087	66,084	39.8	65	0	66,149
15-19	258,656	119,276	46.1	1,778	0.7	121,054
20-24	276,991	126,310	45.6	6,743	2.4	133,053
25-29	310,735	143,805	46.3	11,720	3.8	155,525
30-34	356,322	182,493	51.2	15,044	4.2	197,537
35-39	366,699	200,437	54.7	17,000	4.6	217,437
40-44	325,544	194,773	59.8	16,110	4.9	210,883
45-49	291,312	185,564	63.7	15,575	5.3	201,139
50-54	262,948	184,454	70.1	15,125	5.8	199,579
55-59	285,387	203,632	71.4	16,287	5.7	219,919
60-64	271,707	207,929	76.5	18,816	6.9	226,745
65-69	217,596	178,870	82.2	25,509	11.7	204,379
70-74	166,506	138,794	83.4	35,736	21.5	174,530
75-79	107,003	90,807	84.9	76,107	71.1	166,914
80-84	69,877	60,549	86.7	51,863	74.2	112,412
85-89	44,852	38,869	86.7	33,975	75.7	72,844
90+	28,637	24,829	86.7	22,183	77.5	47,012
Unknown	NA	24,054	NA	8,564	NA	32,618
12+	3,806,860	2,371,529	62.3	388,200	10.2	2,759,729
ALL	4,470,643	2,371,529	53	388,200	8.7	2,759,729

Alberta

OPEN FOR
SUMMER
PLAN

STAGE 1

Triggered 2 weeks after vaccine threshold is reached

Albertans 12+
with first dose

50%

Hospitalizations
under 800

STAGE 2

Triggered 2 weeks after vaccine threshold is reached

Albertans 12+
with first dose

60%

Hospitalizations
under 500

STAGE 3

Triggered 2 weeks after vaccine threshold is reached

Albertans 12+
with first dose

70%

June 1

- **Up to 10 people** for:
 - indoor weddings,
 - outdoor social gatherings,
 - outdoor physical, performance and recreational activities are permitted for all ages,
 - outdoor youth sports, performance and recreation in distanced groups
 - *Indoor social gatherings are still not permitted*
- Outdoor patio dining of tables **up to four people** – Household and close contacts only
- Funerals **up to 20 people**
- Personal and wellness services can **re-open**, by appointment only
- Capacity for places of worship increases to **15% of fire code occupancy** (effective May 28)
- Distancing and masking requirements remain in effect

Mid-June

- Outdoor social gatherings plus indoor and outdoor weddings and funerals **increase to 20 people**, with distancing plus public outdoor gatherings **up to 150 people**
- Retail capacity and capacity for places of worship **increases to one third of fire code occupancy**
- Restaurants may seat **tables of up to six people**, indoors or outdoors.
- Gyms and other indoor fitness **open for solo and drop in activities** with 3 metre distancing between participants, fitness **classes may resume** with 3 metre distancing
- Indoor settings may open with **up to 30% of fire code occupancy** (including indoor recreation centres, arenas, cinemas, theatres, museums, galleries, libraries, etc.)
- Indoors and outdoors youth and adult sports resume with no restrictions
- Youth activities (day camps, play centres) **may resume**, with restrictions
- Personal and wellness services **can resume** walk-in services
- Post-secondary **can resume** in-person
- The **work from home order is lifted**, although working from home is still recommended
- Distancing and masking requirements remain in effect

Early-July

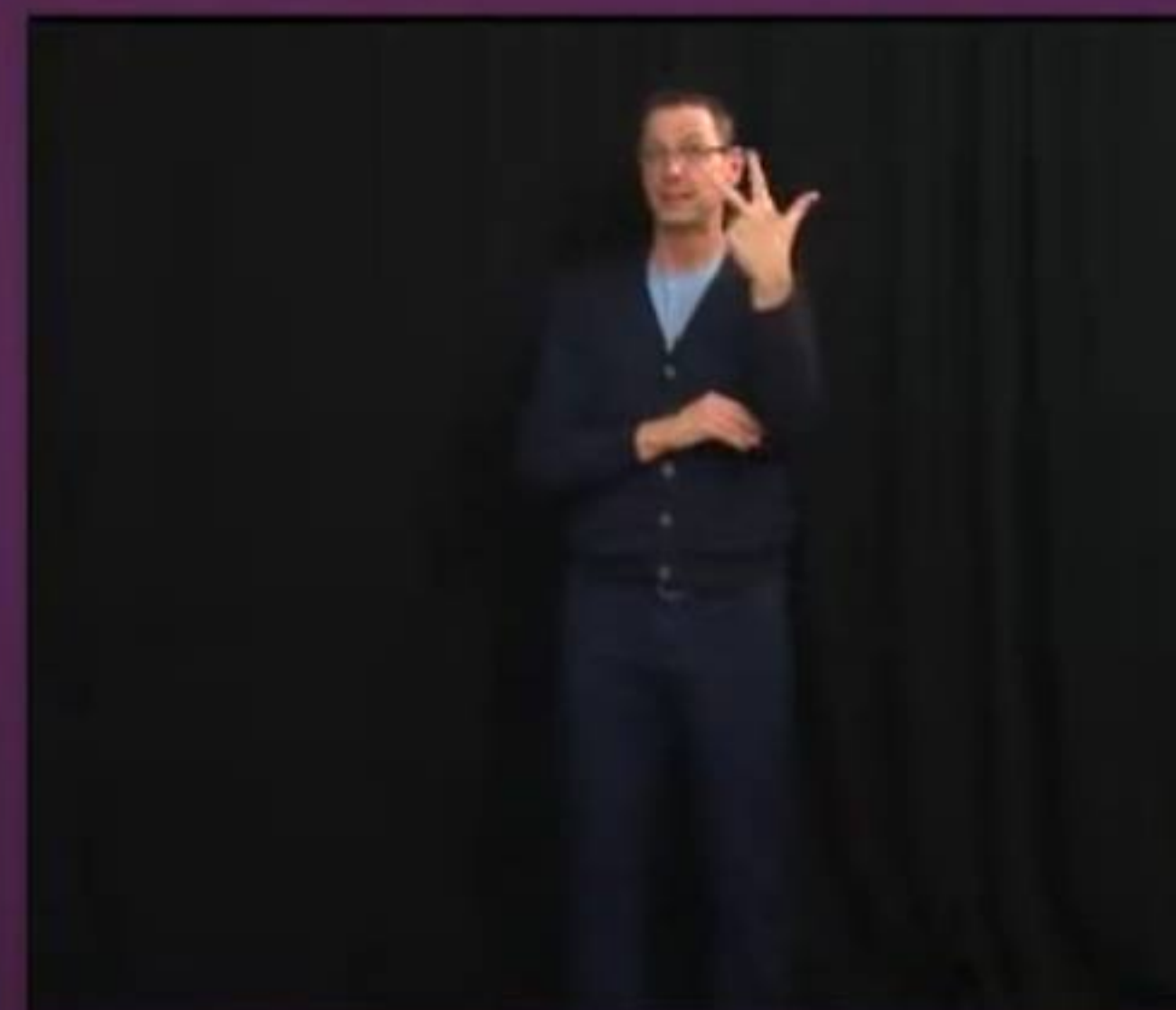
- **All remaining public health restrictions lifted**
- No restrictions on indoor social gatherings
- Isolation requirements for those with COVID-19 and measures in continuing care settings still in place



COVID-19 UPDATE // APRIL 6, 2021

THE PATH TO RECOVERY

Transition	Stage 1	Stage 2	Stage 3
Around 22% immune	Around 48% immune	Around 64% immune	Around 72% immune
<ul style="list-style-type: none"> Easing only possible if Path Forward metrics met Limits on gatherings Strong health measures in place 	Potentially look forward to: <ul style="list-style-type: none"> Higher capacity limits Larger gatherings allowed Some business rules remain Masking and distancing rules remain Isolation rules remain 	Potentially look forward to: <ul style="list-style-type: none"> No restrictions Fairs/festivals can proceed Masking and distancing encouraged Isolation rules remain 	Potentially look forward to: <ul style="list-style-type: none"> Full recovery K-12 School measures depend on vaccine No masking No isolation



May 26th, 2021

After 6 months of vaccine rollout started on December 15th, 2020.

77% of the population in Alberta is over the age of 17... let that sink in.

Stage 3

Around 72% immune

Potentially look forward to

- Full recovery
- K-12 School measures depend on vaccine
- No masking
- No isolation

7.9%



population fully vaccinated

May 29th, 2021

After 6 months of vaccine rollout started on December 15th, 2020.

77% of the population in Alberta is over the age of 17... let that sink in.

Stage 3

Around 72% immune

Potentially look forward to

- Full recovery
- K-12 School measures depend on vaccine
- No masking
- No isolation

10.2%



12+ population fully vaccinated